



ST LAWRENCE CHURCH

BARLOW

PARISH MAGAZINE

FEBRUARY 2025
70p



Happy New Year!

This photo by Roger Barrett. Title photo by David J C Strong.

FEBRUARY 2025

Barlow Parish Magazine 2025

Dear Readers,

Thank you to all our supporters and advertisers - we do hope you enjoy reading and contributing to this magazine and thank you for your continued support.

This is the first edition for this year which means that annual subscriptions and advertisement fees for 2025 are now due.

Subscribers - we have again held the price of the magazine at 70p for an individual copy or £7 for an annual subscription. You will have received an envelope with this magazine which gives details of how to pay (which can be by cash, cheque or bank transfer) and we would politely ask that you make the payment by 31st March 2025.

If you are paying by cash or cheque, please don't forget to put your own name and address on the envelope with the payment. Cheques should be made payable to 'St Lawrence Church Barlow PCC'. If you are paying by bank transfer, please use your name and 'Magazine' as a reference.

Advertisers – We do appreciate your contribution to the magazine and hope that you will continue to advertise with us throughout 2025. The charges for placing an advert remain unchanged from last year (see page 27 for details) and invoices will be sent out shortly including details about how to pay.

The editorial team

**All contributions for the MARCH issue
must be submitted by
Friday, 14th February 2025, 5pm
to ensure inclusion.**

**Please send your articles and interesting photographs
of the local area to: ingohermann17@gmail.com**

WHO'S WHO AT CHURCH

Vicar

Revd. Sarah Colver
07975 689403
25 Oldridge Close
Holme Hall
priest@barlow-
church.org.uk.

Church Warden

Mrs. Julie West
07799 639566
14 Little Brind Road
Newbold
julie@barlow-
church.org.uk

Church Warden

Mr. Peter Gouldthorpe
01246 550152
26 Bentham Rd.
Chesterfield
peter@barlow-
church.org.uk

Parochial Council Officers

Secretary: Mr. Peter Gouldthorpe, 01246 550152
Treasurer: Mrs. Janet Siddall, 01246 206964
Organist: To be confirmed.
Magazine Editor: Mr. Ingo Herrmann, ingoherrmann17@gmail.com
Magazine Distribution: Mrs. Joy Layton, 01246 272096

WHO'S WHO IN THE VILLAGE

Parish Council

Chair – Mrs. Irene Hall
Parish Clerk / RFO – Mrs. Emma Smith
Email: info@barlowvillage.co.uk Mobile: 07841 529122
Available during office hours Mon-Fri, unless in case of an emergency.

NEDDC – Cllr. Pam Jones

Barlow Church of England School

Headteacher - Penny Watkin 0114 2890413

Barlow Pre-School

Manager – Jo Staley 07719 991389

Chairperson – Joel Botham

Barlow Singers

Karen Cook 07759 375312

Young Farmers

Chair – Maddie Needham 07729 696013

Secretary – Clare Wood 07858 579877

Carnival Committee

Chairperson – Terry Allison 07860 758037
info@barlowcarnival.co.uk

YEAR'S MIND - FEBRUARY

*From the church registers - * Denotes date of funeral or ashes burial*

2ND FRANCES MILLINGTON---1971

MARGARET SIDDALL---1969

3RD GLYNNE SIDDALL---1969

SYDNEY D. BINKS---2009

4TH CLAUDE W. HANDFORD (priest)
'73

JAMES H. NEEDHAM---1994

ANTHONY J NAVIN---2022

5TH ALFRED STEVENSON---1963

HARRY MILLINGTON---1968

ARTHUR SHAWCROFT---1985

IVAN L. TAGG---1989

THOMAS HALLETT---1995

ANTHONY NUNN---2023

6TH DAVID E. KING---2009

7TH GERTRUDE BIGGIN---1966

IDA WILSON---1990

ANNE TEW---1991

8TH FRED WASS---1996

ALEXANDER E FAWSON---1999

LEONARD SIMM---2002

9TH SYBIL M. STEVENSON---2005

BARBARA WALKER---2021

10TH PERCY HASLAM---1994

ELIZABETH DAVIES---1997

11TH PAMELA ELIZABETH SPRY---
2018

12TH TREVOR GLAVES---1979

13TH JAMES WALKER---2003

JACK GILLYATT---2017

14TH ERNEST NEEDHAM---1999

JOHN GEOFFREY WRIGHT 2008

15TH WILLIAM SHAWCROFT---1982

TREVOR COCKING---2023.

16TH GLADYS GRETTON---1978

ALLAN PATMAN---1985

FRANCIS W. BEMBRIDGE---1987

CATHERINE M. VIRTUE---1989

ALBERT IBBOTSON---1995

17TH GEORGE A. WARD---1980

*ENA KATHLEEN SHAWCROFT 2016

*JAMES SHAWCROFT---2016

18TH EMILY GODFREY---?

ETHEL W. BOOKER---1988

GEORGE E. WARDLEY---1994

MAURICE LOMAS---2002

*BRENDA MARY PICKERING---2014

19TH ELIZABETH WILSON---1978

COLIN EATSON---1986

ERNEST HASLAM---1994

20TH HETTIE SLATER---1965

JOYCE M CRATCHLEY---2020

ELSIE COLEY---1993

CHRISTOPHER J. PARKIN---2003

DESMOND HARDY---2012

21ST FREDERICK NEEDHAM---1972

NORAH REDMAN---1973

HUGH WILLIAMS---1973

IVY EATSON ---1974

BRENDA BRAMMER---1993

ANNIE LISTER---2009

22ND *ANNIE MARPLES---1990

DORA SKINNER---2009

23RD FLORENCE HICKS---1990

VICTOR BEMBRIDGE---1999

24TH JOSEPH SHELDON---1965

MARION BOSTON---1966

JOHN HOWARD---1968

JOHN PENDLETON---1971

GERALD SHREWSBURY---1989

25TH RICHARD HANWELL---1984

STANLEY TEW---1992

KATHLEEN MATTHEW---1979

JANE BARGH---2018

26TH OLIVE CARTER---1987

ETHEL LAYTON---1994

27TH JEFFREY SYDDALL---2022

28TH WILLIAM E. PICKERING---1997

GILBERT WOODALL---1976

MAUREEN VERA LISTER---2017

29TH MARJORIE WHITEHOUSE---1968

FROM CHURCH REGISTERS: FEBRUARY 2025

Baptisms None

Funerals

3rd December 2024---Rita Drury...Funeral with Requiem Mass & Burial

18th December 2024---David Ross...Funeral & Burial

13th January 2025---Malcolm Calvert... Ashes Burial

Marriages None

15th December 2024---Confirmation Service at Barlow

Candidates from Barlow: Eleanor Barnes, Adam Furby

BARLOW CHURCH (ST. LAWRENCE)



Dear Friends,

"Historical names for February include the Old English terms meaning 'mud month'; and Kale-monath (named for cabbage). In Finnish, the word for February means 'month of the pearl'; when snow melts on tree branches and it forms droplets; as these freeze again, they are like pearls of ice. In Polish and Ukrainian, the word for February means the month of ice or hard frost. In Macedonian the word for this month means 'the month of cutting wood'" (courtesy of Wikipedia). And, lastly, our word February comes from the Roman festival of purification called 'Februa', during which people were ritually washed.

What's in a word? Quite a lot, it seems, when we set up seasonal associations! But then: *"A rose by any other name would smell as sweet"*: A popular adage from William Shakespeare's play *Romeo and Juliet*, in

which Juliet seems to argue that it does not matter that Romeo is from her family's rival house of Montague. The reference is used to state that the names of things do not affect what they really are.

We all live in a bit of a swirl of words: at work, in the family – parents of young infants spend a lot of time (or should do!) introducing their children to the words of their language. Words abound in our social lives; in TV and film and in the media. So, are words (spoken and written language) the be-all and end-all of our lives? How often for example are arguments sparked by misunderstandings of what was said or written or the way it was said or written? Could this be why we use emojis to avoid misunderstandings? And, do we sometimes over-rate words? There are a few films around without any dialogue. They're worth a watch!

Deep down, we often realise that words are just the tip of an iceberg: they are just an indication of what we really think and feel. Actions speak louder than words.

On the Christian front, this last saying was certainly marked in the life of Jesus on Earth. Yes, He taught the crowds about God's love for them, but He also demonstrated it by his acceptance of those at the bottom of the social pile; by healing those whose lives were crippled by illness and, of course, by showing his willingness to die a horrible death to show God's love for us.

In the Bible's Old Testament, where words are sometimes used in ways which seem rather strange to us, we can read this:

"Set a guard over my mouth, Lord; keep watch over the door of my lips."

Blessings, Rev'd Janet Quick

CHURCH NEWS

(ST. LAWRENCE)



Dear Friends,

Happy 2025 to everyone! As promised, we have been planning our activities and are looking forward to another busy and exciting year. We

will introduce just a few of our events here, with more to follow and please look out for additional events throughout the year.

We are looking forward to welcoming the school and pre-school children into Church again along with their teachers and families and we will soon be preparing for Easter, but more news about that next month.

Lent Breakfasts

As usual, our year commences with the Lent breakfasts. This year Ash Wednesday falls on the 5th March and we will be serving breakfasts on this and the following five Wednesdays from 9.30am, last orders at 11.30am; vegetarian option and takeaways also available. We do hope you will be able to join us.

Open Gardens

Hopefully you already have the date in your diaries. If not, Open Gardens will be held on Sunday 6th July. We know it seems early, but a lot of organisation goes into this event and so if you would like to take part could you please think about letting us know as soon as you can. You can e-mail or telephone Churchwarden Julie West, whose contact details are at the front of this magazine. Thank you.

Flower Festival & Well Dressings

We are certain you all have carnival week in your diaries already as the real highlight of the Barlow calendar. The well dressings and the flower festival will run alongside as usual from August 13th to 19th.

Upcoming Events

Lent Breakfasts:

March 5th, 12th, 19th, 26th and April 2nd and 9th --- 9.30am -11.30am

Open Gardens: Sunday 6th July 2025

Flower Festival: August 13th -19th 2025

Harvest Supper: Sunday 12th October 2025

We hope to welcome many of you to our events and Church services over the coming months. With best wishes,

Pete & Julie.

Regular services for FEBRUARY

Sunday 2nd February: 11am service

Sunday 9th February: 8am Mass; 11am family service

Sunday 16th February: 11am service

Sunday 23rd February: 11am service

LENT BREAKFASTS

ST LAWRENCE CHURCH, BARLOW

Every Wednesday in church during Lent!

The price is £6.50 for a cooked breakfast (bacon, sausage, egg, tomato and mushrooms, with choice of tea or coffee and served with toast or a bap).

Served between 9.30am & 11.30am on:

March 5th, 12th, 19th, 26th

April 2nd & 9th

Come and bring your friends for a delicious start to your day.



SCROOGE – A REVIEW

St Lawrence Church, Barlow

27th and 28th November 2024

If you missed this, you missed a treat! We turned up on a cold winter's night to be met at the church door with a welcome and a carol sheet by Dickensian-costumed hosts/hostesses and we soon found our seats, although there weren't many spare!

The church had a suitably Dickensian atmosphere provided by so many people in costume and by a huge mural, complete with carol singers and shop fronts, just like a Victorian street scene. It was painted by Janice Chapman, a fantastic achievement on its own.

The show was soon under way, with an introduction by the Narrator, who struggled a bit with a sore throat, but we could still hear him, despite that. (Well done, Pete.)

The script was lively with lots of humour and the characters played their parts very well. Even we, the audience, had our part to play. We were the carol singers and we were called upon to sing quite frequently, our efforts being boosted by members of the Barlow Singers, to whom we were grateful!

Scene changes were managed very cleverly: Bob Cratchet apparently being in the habit of taking his desk etc. home with him which was pointed out by the narrator to everyone's amusement.

At the Interval we were all served in our seats with refreshments: either sherry or soft drinks with mince pies or shortbread. All very civilised.

All in all, it was a very pleasant evening, thanks to the hard work, time and skill of a group of people (you know who you are!) who put in a great deal of effort to make this the success it most certainly was. We look forward to next year in anticipation of another wonderful evening's entertainment. Thank you to all concerned.

Jane Booker



PARISH COUNCIL



CHAIR – Cllr I Hall 0114 289 9361

VICE-CHAIR – Cllr I Herrmann 07870 489 016

CLERK / RFO – Emma Smith 07841 529122 info@barlowvillage.co.uk

COUNCILLORS:

Cllr J Brougham 0114 289 1411

Cllr T Cribley 07722 006846.

Cllr N Ibbotson 07967 005069

Cllr S Marshall 0114 2890596

Cllr J Siddall 01246 206964

Cllr P Taylor 0114 2890949 / 07753 662 619

Planning Matters

PLANNING APPLICATIONS FOR CONSULTATION

NED 24/00973/AGD – Application for prior notification for Agricultural storage building for machines and fodder storage at Lane East of Fig Farm, Grange Lane, Barlow

RESOLVED no comment

PLANNING DECISIONS

NED 24/00973/AGD – Application for prior notification for Agricultural storage building for machines and fodder storage at Lane East of Fig Farm, Grange Lane, Barlow – **Approval of details required 19**

December 2024

RESOLVED noted

ANY OTHER PLANNING MATTERS

Planning appeal at Bluebell Woods Cottage, Barlow

RESOLVED Clerk to submit previous comments agreed.

PLANNING APPLICATIONS CIRCULATED AT THE MEETING

NED 24/01041/FLH – Ground floor front extension to hall (Affecting a public footpath) at 5 Valley Road, Barlow

RESOLVED BPC supports the planning application.

Barlow Parking Concerns

Barlow parish councillors have regularly listened to and discussed residents' concerns with parking in our village and have frequently been in contact with the relevant agencies to seek solutions. Please see below a response from PCSO Flower regarding these issues, bearing in mind that the 'Do not' section of the letter should be addressed mainly to the visitors from outside the village (not the locals):

"Over a period of time we have had a number of concerns raised in relation to parking across the Parish of Barlow, especially around the two ends of the village and Springfield Road. Parking concerns require a joint approach as some agencies have different powers than others to tackle and challenge poor parking. Some of these agencies include Derbyshire County Council, NEDDC Parking enforcement along with Police and others.

We, as a local team, have received and shared a number of images showing vehicles causing significant impact to either other road users or people in the community using the footpaths. Wherever you park your vehicle, you should consider the impact to other members of the community. We also acknowledge that lots of places have been designed for far fewer vehicles than the number on the road today.

Do not

- Stop or park near a school entrance and keep off school keep clear markings
- Double park to pick up or drop off children from vehicles
- Park in such a position that buses, the emergency services and other commercial vehicles are unable to pass
- Block a pavement - you must allow space for a double buggy width for people to use it safely

You should

- Consider local residents and whether they have immediate access onto and off their driveways
- Consider people who are blind, partially sighted, elderly, people who use walking aids, mobility scooters and wheelchairs along with adults with prams and many more
- Obey in force parking restrictions that are in place
- Consider parking further away from your location if you are able to do so

Over the coming weeks you will see patrols regularly through Barlow and surroundings at key times and locations that have been reported to us.

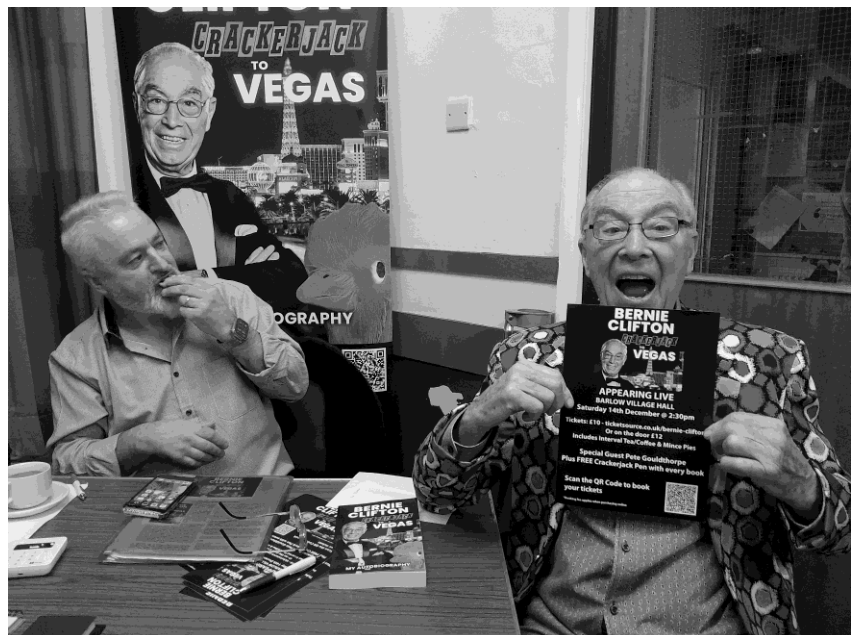
In terms of solving problems at local parking hotspots in the future, we are awaiting a reply from DCC Highways and other relevant agencies to look at changes that may be considered to improve this situation. We are seeking to do this alongside other key partners, including Barlow Parish Council and any other agencies identified.”

Message sent by PCSO Flower



Bernie Clifton at the Village Hall

This thoroughly enjoyable afternoon of December 14th 2024 was attended by approximately 70 people who were treated to some amusing anecdotes from Bernie's life, as featured in his recently published autobiography 'Crackerjack to Vegas'. Music was provided by Pete and Bernie evoked many memories of his Crackerjack days.



Barlow Nature Club

After a bit of a break Barlow Nature Club is back!

The last session held was on Saturday 25th January. Further events will take place throughout 2025.

You can sign up for future events at

<https://www.eventbrite.co.uk/.../barlow-nature-club...>



Emma Woods



BARLOW *nature* CLUB

 Family friendly meet up to
learn about the nature on our doorstep. 

**Search Barlow Nature Club
on facebook or Instagram
for more information**

 All children must be accompanied by a parent
or guardian at all times. 

Sessions are free but donations towards
running costs encouraged.

No dogs please. Bring your own refreshments.

 Sponsored by



**North East
Derbyshire**
District Council

Do you enjoy quizzing?

Why not meet up and have a go at the new

QUIZ NIGHT

at the Village Hall!

This new event will be held on every first Wednesday

of each month and will commence on

MARCH 5th 2025.

Your quizmaster: **Tommy Crowley!**

Hall doors open from 7.30pm,

Quiz to start at 8pm sharp.

Only £1 per person to enter!

Tea & Coffee available. Other drinks and nibbles: Bring your own!



BARLOW PRE-SCHOOL



Dear Friends,

We hope you all had a lovely Christmas and wish you all a very happy new year!

How can it be February already?

We have been busy finding out all about Winter this term. This was especially appropriate with all the snow we've been having! We had a great time sledging and playing in the ice and snow. Painting with powder paints on the ice was very popular.



Last month we had a monitoring visit from the Confident Communicators accreditation team. This was a visit to assess how we are getting on, being a communication friendly setting. All of our staff have had training to promote early language development in the early years. Zoe, the assessor, was really pleased with our progress and thought we were the nicest pack away setting she has ever visited!

Our Christmas fundraising activities raised a huge £867. Thank you to everyone who contributed, especially our parent committee, for making

the hampers for the raffle and selling raffle tickets. We are still saving towards replacing our outdoor surface. If anyone has any contacts to companies who specialise in wet-pour surfaces please let us know. We would be interested in getting a quote from them.

In January we took part in the RSPB Big Garden Bird Watch. We used our home-made binoculars to spot the birds and counted how many different species we saw. The children enjoyed making bird feeders to feed the hungry birds. Jo

BARLOW SCHOOL



Dear Friends,

Term opened with a snow day and the snow lingered all week, making it tricky to get out and play and causing issues for people getting to and from school. Once the snow had gone, we all got back into the rhythm of winter days. We are really appreciating the effects of the new heating system we had installed over the summer.

The theme for this half term is friendship. All our collective worship is themed around this with children encouraged to reflect on what makes a good friend and think about how they can be good friends to each other.

Music

Our trumpet and cornet players continue to work very hard with Mrs Hannah Jones, the specialist teacher from the Derbyshire Music Partnership. Emerald class are all able to play their instruments in unison and lessons include a mix of games, rhyming patterns and singing. A small group of Sapphire children chose to continue their lessons after

beginning two years ago in Emerald. These children have been working hard. Liv and Olivia wowed everyone at our Christingle service with their playing!

After all their hard work practising in the Autumn term, Sapphire class finally made it to Young Voices on Friday 10th January. They had a long afternoon rehearsing with David Lawrence, the conductor. Then it was on to the evening show. Excitement steadily built up as we watched for parents arriving and the lights began sweeping over the choir of 4000 children. Then it was straight into the singing and dancing. Our parents had a fantastic view from the first few rows in front of the stage. The children sang alongside some special guests including Tommy Blaize, lead singer from Strictly, MC Grammar, World Book Day Ambassador and Souparnika Nair from Britain's Got Talent. Urban Strides shared some of their Street Dance moves with us and the children danced along. The atmosphere was buzzing. As ever, it was a fabulous event to be part of.



World Book Day

This year on World Book Day, our theme is going to be Bedtime stories, so instead of dressing up, we are going to ask children to come in pyjamas, onesies or dressing gowns. There will be lots of opportunities to read and share books as well as taking part in some book-themed activities.

Nurture Room

We have had a fantastic new nurture room decorated for us over Christmas. Our old storage room was repurposed as a nurture room in the summer of 2023, but we had no money to decorate so it still had the old woodchip walls and brown carpet from days gone by. This all changed in the Christmas holidays thanks to **Adam Ward** and **Peaceward**

Building services. They kindly donated all the materials and labour to turn this into an inviting multi-purpose room. We are so pleased with the finished result which can now be used for small teaching groups and to support nurture activities for some of our children who need additional support. Our final step is to get some new tables and soft furnishings. We are extremely grateful for the hard work that went into this, including stripping it back to bare brick, plastering, painting, fitting a new radiator and adding the finishing touches.



Sport

We have started the new term with Miss Wilbourn and some dance sessions for Emerald Class and Ruby2. Emerald class are building up to a performance at the Dance festival in March at the Winding Wheel. Our first sports festival of the term was for Emerald and Sapphire class and was called the Cube. It included physical and mental challenges such as cracking a colour coded sequence of cones and scrambling through strings with different size holes. The silver ambassadors from Whittington Green School did a fabulous job of guiding the children through the activities and our children responded brilliantly, joining in everything and listening well.

Applications

Applications are now closed for Reception entry in September 2025. Places will be announced by Derbyshire County Council in April. We do have some spaces in other year groups, so if you know a child who has recently moved to the area, please encourage them to contact the office on 0114 289 0413 and book a tour of the school.

Penny (Headteacher)

FOBS

Friends of Barlow School

Dear Friends,

As we embark on the new year, FOBS have some exciting news to share. Prior to Christmas, we put out an appeal for support with upgrading an upstairs room at school. The school needed a small quieter space, to be used for SEND activities, nurture groups and for reading. Previously it wasn't an inviting space, but we have been very lucky in gaining the support of a local construction company through some of the parents at school. Peaceward Building Services worked over the Christmas period to complete the room. It was a bigger job than initially envisioned, with everything being stripped back to brick, but the team worked really hard to have it complete for the start of term. We are so thrilled with the result and want to extend huge thanks to Fran and Adam Ward for making this happen. The school now has a beautiful bright clean space for the children to enjoy, what a wonderful gift to start the new year.

Prior to Christmas we were able to raise more money towards our goal of providing 10 new iPads for the school with our Christmas raffle. We were very kindly supported by some of our local businesses and wanted to recognise their ongoing support. The Tickled Trout, The Peacock at Owler Bar, Dunston Hall Garden Centre, Barlow Woodseats Hall, ABell Cleaning and Play Valley. Thank you, your generosity is very much appreciated by the FOBS team

We also had kind donations for both the raffle and in support of the new nurture room from some of the parents as well and again we are hugely grateful.

Our next planned event will be the our 2nd pop up craft club, which was well attended and much enjoyed last time so we hope will be again. We are also hoping to hold a charity dance night in the near future at the village hall, with a reunion for the Barlow Zumba ladies to raise some funds.

Finally we have our Easter Raffle, and apologies in advance as again we will be looking for support with prizes, please consider whether you could help us.

Thank you, Helen & the FOBS team.

YOUNG FARMERS

In December we saw the return of the annual Christmas tractor run which again was a huge success and was thoroughly enjoyed by all who managed to catch a glimpse of the fantastic run passing through Barlow and surrounding areas, delivering Santa to his awaiting crowds by the village green. The weather was kind and the event was as busy as ever. This is something Young Farmers really enjoy taking part in so a huge thank you for everyone who came out to support the event, Young Farmers and British Farming!

Young Farmers was back for 2025 at the beginning of January, but due to the wintry weather we were experiencing we postponed for a week like many things due to the adverse weather!!

The first meeting back was a joint North East Derbyshire region meeting hosted by Ashover YFC. A talk was given by the NFU on all things health and safety within the farming sector. This was thoroughly enjoyed by all the members who attended.

Going forwards we are looking forward to meetings including a trip to Ninja Warrior UK, Ice Skating and a meeting hosted by the Junior Chairman and Secretary to learn about all things Stock Judging in preparation for the Stock Judging and Stockman of the year competitions.

Plans are also in motion for the programme leading into the spring and summer as well as the annual Dinner and Dance and County Rally competitions day.

As always new members are always welcome and for further information contact details can be found at the front of the magazine.

Rosie



PLANET PARADE

Get your telescopes out!

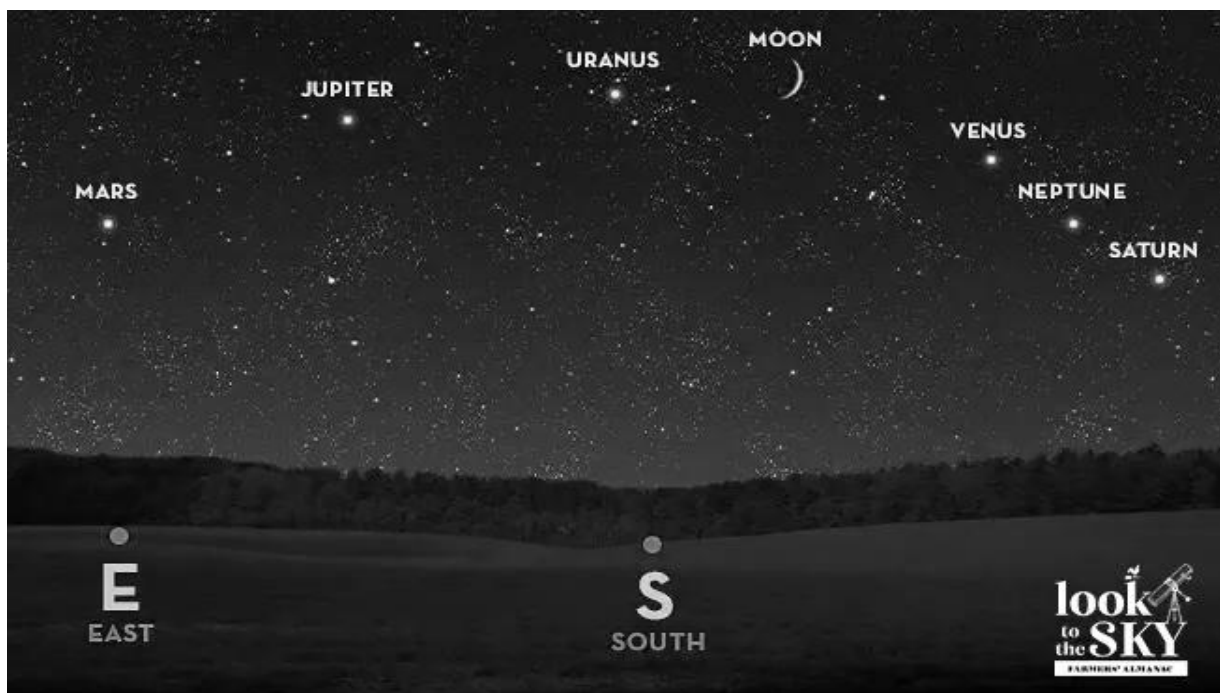
Six planets have now aligned in the sky, beginning a 2-month-long grand alignment of the planets in our solar system. Soon it will turn into a 7-planet parade when Mercury joins the line-up.

As the twilight fades to darkness, look toward the southwestern horizon. There, you'll spot Venus and Saturn appearing close together. Venus, the brighter of the two, will be unmissable.

Higher in the sky, you'll find Jupiter, the second brightest speck of light in the night sky after Venus. Jupiter recently passed its opposition, making this one of the best times of the year to observe the gas giant with the naked eye.

Near the eastern horizon, Mars will shine brightly with its signature red hue, making it a captivating sight in the night sky. January is the best month of the year to observe the Red Planet, as it will steadily grow brighter leading up to its closest approach to Earth in over two years. On January 15, Mars was at opposition. This meant the planet lay opposite the Sun and shone brightly throughout the night.

Uranus will be positioned near Jupiter, and Neptune will be close to Venus and Saturn. You will need optical aid to see both these ice giants as their magnitude is beyond the naked eye limit.



<https://www.farmersalmanac.com/planet-parade-2025>

BARLOW PEOPLE

Jenny Betts

One Saturday towards the end of March, 1963, two teenagers walked into North End Music Stores in Liverpool and asked to buy a new single called, 'Please, Please Me', the second release by obscure newcomers The Beatles. One of them was Jenny, this month's 'Barlow person'. We'll be hearing more about her friend Rose a little later, but for now, let me take you down to Heswall village on The Wirral, in 1947.....

Born just six months before the founding of the NHS, Jenny arrived two months prematurely and spent the first six weeks of her life in an incubator, making her one of the first children in the North West to receive this form of neonatal care. Lower Heswall, where Jenny grew up, was a quiet, unassuming town. She remembers visits to her grandmother's house, where she would listen out for passing motor cars, still a very rare sight back then.

In 1954, the family moved a little further up the peninsula to the pretty village of Caldy, resulting in a two and a half mile walk to St Briget's Primary for seven year old Jenny. But what a walk it was. With the Welsh mountains as a backdrop and the beautiful Dee estuary spread before her, Jenny loved to watch the wheeling seabirds above and busy waders on the expansive sands. Red squirrels were a common sight along the way too.

By the time she was nine or ten, on alternate Sundays Jenny and her friends would set off, at low tide, on carefully planned excursions across the sands to idyllic Hilbre Island, out in the estuary. Once there, they would share a picnic, get up to mischief and generally have a good laugh, before low tide returned, allowing them safe passage home. Sundays in between were spent at Church, in much the same way, but without the picnic.

She swapped West Kirby Grammar School for Chester Royal Infirmary, to begin a lifelong career in nursing, initially specialising in general nursing, then midwifery, before moving into community care. The very long hours, hard work and dedicated study, all under the watchful eye of Matron Miss Lewis, were counterpointed by intense friendships and, it has to be said, a good deal more mischief. Out-of-hours, of course. I'm going to pull the screens around most of this, but suffice it to say, there was a certain

amount of climbing in through upper storey windows, post curfew.

Following four rewarding years at Chester, Jenny and her best friend, Glenda took an adventurous trip to Italy for an extended 'working holiday'. Arriving in Rome with five pounds to their name, they sought refuge in a convent, soon finding jobs at the nearby Salvator Mundi hospital. Further adventures followed, including a brief assignment caring for the CEO of a glass manufacturing company, before the pair returned to Britain and permanent jobs.

Jenny and Glenda's paths diverged in 1970. Glenda settled in Bristol, while Jenny relocated to Sheffield to work at Nether Edge Hospital. Let's leave them there for now and return to 1963.

Jenny and her friend Rose followed all the local beat groups, but for Jenny, no-one could top The Everly Brothers. Her devotion to them was complete. On one occasion, while queuing to get into their Liverpool Empire concert, she ignored being chatted up by their support act that night - The Rolling Stones. While we're name dropping, Rose's sister, another Jenny, lived on the same road in Hoylake as Cynthia Powell, later Lennon. She even went out with George Harrison for a while, before his Beatle days. Her verdict? He was 'a bit of a drip'. Ah well, this was all a long, long, long time ago....



Jenny in 1967 –
Sixties style personified

Jenny met her husband John, a production engineer at Stanley Tools, on a blind date at the Old Number 12 Tavern in Sheffield. They were married at the beautiful little church in Caldby on 14th February 1971, just one day before the UK went decimal! Two children, Liam and Stephanie, quickly followed. Stephanie took after her mother in at least one significant way. She too was born ahead of schedule. By just a few minutes this time, in Jenny and John's neighbours' caravanette. At the traffic lights, on the crossroads, just down the road from Nether Edge Hospital.

Jenny and John moved to Barlow in 1983, in pursuit of more space and, for Jenny, a return to a more rural location, though she misses the coast to this day. She feels blessed to have had such a happy childhood, working life and marriage. Jenny is exceptionally proud of her children,

Liam and Stephanie, both of whom have grown up to be, as she simply puts it, 'good people'. And, tellingly, she still has all her friends, including Glenda, whom she'll be visiting down in Bristol soon. Proving once again, if it were ever in doubt, that the love you take, is equal to the love – you make.

Peter Baldry

POETRY CORNER

Smiling is infectious
You catch it like the flu

When someone smiled at me
today
I started smiling too

I walked around the corner
And someone saw me grin

When he smiled I realised I
had passed it on to him

I thought about the smile
And then realised its worth

A single smile like mine
Could travel round the earth

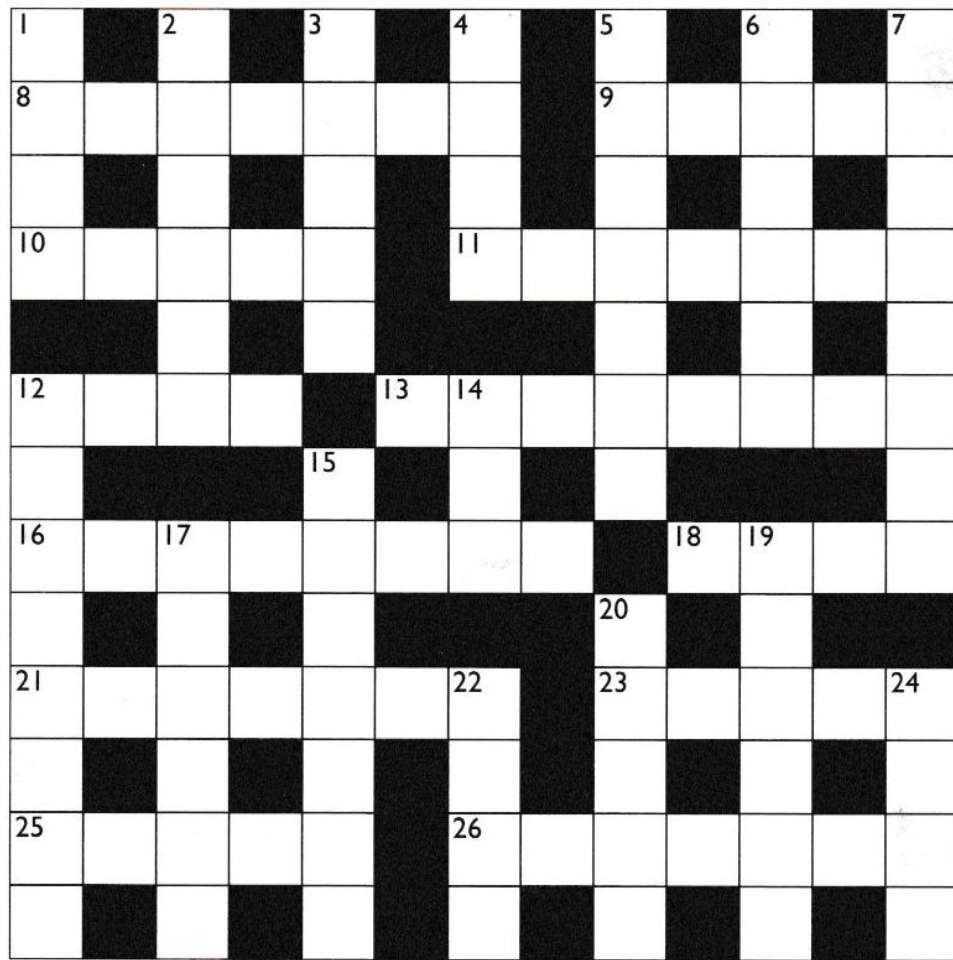
So if you feel a smile begin
Don't leave it undetected

Start an epidemic
And get the world infected.

Spike Milligan



PUZZLE PAGE



ACROSS

- 8 Overjoyed feeling (7)
- 9 Aquatic mammal (5)
- 10 Vagrant (5)
- 11 Vow (7)
- 12 Boat (4)
- 13 Created (8)
- 16 Unsure on one's feet (8)
- 18 Infant (4)
- 21 Carry out (7)
- 23 Concerning (5)
- 25 Silly (5)
- 26 Liquidiser (7)

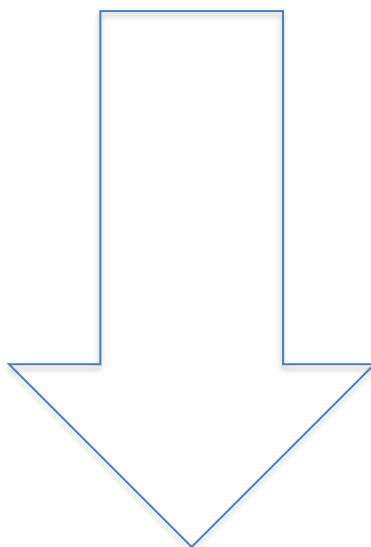
DOWN

- 1 Nuisance (4)
- 2 Wildlife expedition (6)
- 3 Walks with difficulty (5)
- 4 Cut (4)
- 5 Crown (7)
- 6 Severe (6)
- 7 Amicable (8)
- 12 Memento (8)
- 14 Bow the head (3)
- 15 Made safe (7)
- 17 Park play equipment (6)
- 19 Dodges (6)
- 20 Keen (5)
- 22 Flows away (4)
- 24 Rubber wheel covering (4)

ADVERTISEMENTS

FOR BUSINESS ADVERTISING
please contact the Church Treasurer Mrs Janet Siddall
on 01246 206964.

Prices are as follows: Third of a page = £20
Half a page = £40
Full page = £50 per year!



Barlow, Newbold & District WI

Barlow, Newbold & District Women's Institute extends a warm welcome to anyone wishing to learn more about the WI, or simply to join us as a guest for an afternoon.

WI Meetings are held on the third Thursday of each month at:

Loundsley Green Community Centre, Cuttholme Road, Chesterfield, S40 4QU

From 3.30pm until 5.30pm

For more information contact: Janet Virag mobile number 07531 197324

Sue Hinde mobile number 07885 763905

Homemade Cakes

EAT-IN OR TAKEAWAY



INDULGE IN ONE OF OUR HOMEMADE CAKES OR
SCONES IN THE COMFORT OF YOUR OWN HOME!



**WHY NOT TAKE A COFFEE
WHILE YOU'RE AT IT?**

PRIVATE

Room Hire

BOOKINGS MONDAY-SUNDAY ANYTIME

Call us and book in for your special occasion now! (16 people maximum)

FREE TO BOOK or Hire packages available upon request

GIFT VOUCHERS



MONETARY VOUCHERS - STARTING FROM £10

These can be purchased over the phone for an email voucher or in person.

They can be redeemed against our food, drinks and even accommodation



**STAY IN TOUCH!
SCAN ME**

>VIEW OUR MENUS

>LEAVE A REVIEW

>BOOK A ROOM

>SEE WHAT'S ON

Upcoming events

2025

FEB
18

FIRST QUIZ NIGHT

The quiz is back! Join us every Tuesday for a brand new quiz with fab prizes.

FEB
26

CURRY NIGHT 2.0

Join the trout and the Asti family for another night of delicious curries and snacks!

MAR
20

EVENING IN PORTUGAL

Enjoy an evening exploring Portuguese cuisine.

APRIL
10

EVENING IN GREECE

From gyros to ouzo, we'll have it all!

APRIL
30

EVENING WITH CHAPEL DOWN

Taste the best of England with fine wines and locally sourced food.

MAY
08

SUMMER CURRY NIGHT

We know you love it so here's another...

JUNE
19

CARRIBBEAN & RUM EVENING

Taste delicious food, rum and cocktails to get the summer going.

JULY
24

MEXICAN & TEQUILA EVENING

Arriba! Tasty tacos and summer vibes!

*Tickled
Trout*

Enquire Now!

dine@tickledtroutbarlow.com

0114 289 1111

Millthorpe Nursery

We're getting ready



We're busy growing lots of lovely
spring-flowering bulbs and plants and will be
back open in mid February

We look forward to seeing you!

Millthorpe Lane, Holmesfield, S18 7SA



01142 890334



Open Wednesday - Sunday 10am - 4pm

Abell ✓

CLEANING SERVICES

Fully insured by
Markel direct



COMMERCIAL CLEANING

Providing bespoke cleaning to your office, workshop and communal areas ensuring your workspace kept to a high clean and hygienic standard.



DOMESTIC CLEANING

From regular cleaning to deep cleans we can build a bespoke service to help keep your home clean and at its best.

Services include

- *House cleaning*
- *Office cleaning*
- *Deep cleaning*
- *End of tenancy*
- *Carpets & upholstery*

- *Floor cleaning*
- *Ovens, hobs & extraction*
- *Patios, paths, decking & driveways*
- *Gutters, gullies and Axo drainage*
- *UPVC doors, frames & conservatories*

And much more

Family run business based in Cutthorpe.
We are Abell to suit your cleaning needs ✓



Abell Cleaning Services



abell_cleaningservices



Adam - 07427 071051



enquiries@abellcleaningservices.co.uk



Www.Abellcleaningservices.co.uk



Scan here to visit our website

01246 411062

nailandbeauty7@outlook.com

A Dronfield based salon established over 40 years ago. The Nail & Beauty Studio welcomes clients new and old. We offer a warm, friendly atmosphere and a full range of skin, nail and body treatments using leading skin and nail care brands.

Facial skincare.

Hand and Foot treatments.

Body and holistic massage therapies.

SkinPen microneedling .

Laser hair removal and IPL skin rejuvenation.

AQUAPURE



illumiFacial®

SkinPen®
BY CROWN AESTHETICS



● ● ●
● ● ●
● ● ●
ADVANCED
NUTRITION
PROGRAMME™

GUINOT
INSTITUT • PARIS

Jai Retreat Beauty & Holistic

With 26 years of experience, Adele at Jai Retreat has trained with the International Dermal Institute at Dermalogica and specialises in Advanced Skin Treatments. She also offers Beauty & Holistic Therapies at Sudbrook Therapy Centre.





Beauty Room at The Barn

**A relaxed hideaway with an
extensive treatment list.**

Crystal Clear Skincare Facials

Relaxing & Deep Tissue Massage

Gel Bottle Nails

Beauty Essentials

The Barn

Unit 4, Church Farm, Barlow.

Late nights Tuesdays & Thursdays

Please call - 0114 2899119

UNTHANK HALL

— TRADITIONAL MEATS —

WE ARE A FAMILY RUN FARM
PRODUCING THE BEST HOME
GROWN, GRASS FED DEXTER
CATTLE AND OUTDOOR
REARED PIGS AND SHEEP

Order your meat boxes direct on our new website
www.unthank-meat.co.uk



charlotte@unthank-farm.co.uk

www.unthank-meat.co.uk

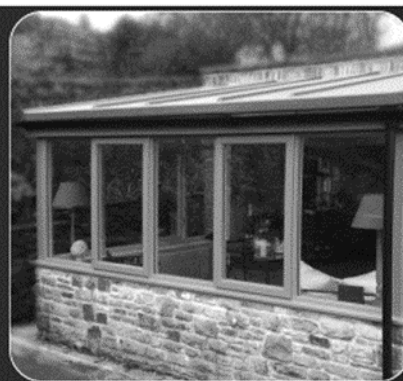
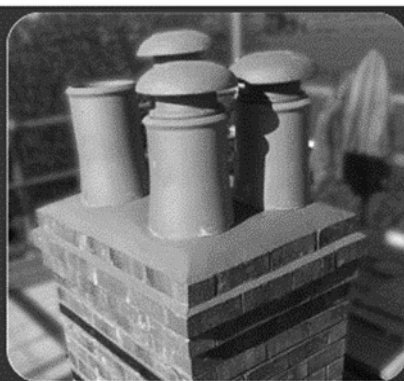




1ST CLASS
ROOFING & BUILDING LTD
40 YEARS IN THE TRADE



PROFESSIONAL SPECIALISTS IN FIBREGLASS ROOFING



FIBREGLASS SPECIALISTS:

FIBREGLASS IS HIGH STRENGTH AND LIGHTWEIGHT. WHETHER SIMULATING LEAD OR COPPER SHEATHING, REPAIRING LISTED BUILDINGS OR USE IN ENVIRONMENTALLY SENSITIVE AREAS, FIBREGLASS PROVIDES THE PERFECT ANSWER AND CAN BE INSTALLED RAPIDLY ON BOTH DOMESTIC AND COMMERCIAL APPLICATIONS BY OUR FULLY TRAINED STAFF TO ENSURE WORK OF THE HIGHEST STANDARD.

OTHER SERVICES AVAILABLE:

- FASCIA / SOFFIT / GUTTERING
- ROOF MAINTENANCE
- SLATING AND TILING
- POINTING
- CHIMNEY WORK
- DRY RIDGE
- GUTTER CLEANING
- STORM DAMAGE
- ALL TYPES OF BUILDING WORK UNDERTAKEN



WE ARE A FAMILY RUN BUSINESS SUPPLYING A VAST AMOUNT OF EXPERIENCE IN BOTH BUILDING & ROOFING, & FULLY TRAINED STAFF OFFERING WORK OF THE HIGHEST STANDARD.



WHETHER IT BE A DOMESTIC OR COMMERCIAL PROPERTY, WHATEVER SIZE OF COMPLEXITY, WE HAVE THE EXPERTISE AND EXPERIENCE TO PROVIDE THE SOLUTION.



WE HAVE BUILT A 1ST CLASS REPUTATION ON THE BASIS OF PROVIDING CLIENTS WITH A QUALITY SERVICE COMBINED WITH EXCELLENT VALUE FOR MONEY.



01246 860690 / 07890 676623



1ST CLASS ROOFING AND BUILDING LTD



WWW.1STCLASSROOFS.CO.UK
FIBREROOFS@HOTMAIL.CO.UK



@1STCLASSROOFINGANDBUILDINGLTD



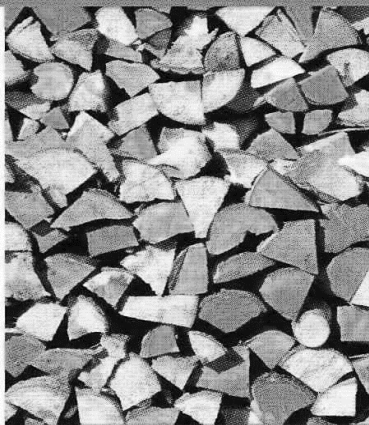
Keep warm this winter.



ALL TYPES OF FIREWOOD DELIVERED DIRECT



HARDWOOD & SOFTWOOD LOGS



KINDLING



BESPOKE LOG STORES

Our quality seasoned firewood logs are used for stoves and open fireplaces.

We supply air dried and kiln dried firewood which is perfect to burn straight away. Whether it be hardwood or softwood it's all sourced locally and harvested from sustainably managed woodland.

All our log stores are built on site and can be made to your specifications.



PLEASE CALL CHARLIE FOR ANY ENQUIRIES OR ORDERS

M: 07712 172966 E: CHARLIE@VILLAGELOGS.COM

MOORGREEN FARM, FAR LANE, BARLOW, DERBYSHIRE S18 7SE

WWW.VILLAGELOGS.COM

NEED A HANDYMAN?

**LOOK NO FURTHER THAN FORMER BARLOW RESIDENT
STEVE WALKER.**

**ALL JOBS CONSIDERED,
NOTHING TOO SMALL:**

**GARDENING & PATIO/FENCE MAINTENANCE,
PAINTING, POINTING,
TILING, JOINERY,
SMALL BUILDING JOBS & REPAIRS.**

WILLING TO LOOK AT ANY TASK, HOWEVER SMALL.

CONTACT - 07800924214

EMAIL: walker1939@hotmail.co.uk

I&G CHIMNEY SWEEP SERVICES

**27, KINGS MEWS
ECKINGTON
S21 4JB**

TELEPHONE: 01246436486

MOBILE: 07854947851

07971384571

M J JONES JOINERY & BUILDING SERVICES



COMPLETE JOINERY, KITCHEN, WINDOW AND DOOR SUPPLY, DESIGN AND INSTALLATION.

All aspects of joinery undertaken by time served carpenter with 40 years of experience working in commercial and domestic settings.

Experience and expertise in:

- Summer/office garden rooms.
- Bespoke kitchens, kitchen design and fitting.
- Windows, roof lanterns and bi-fold doors in timber, UPVC and aluminium supplied and fitted with full manufacturers guarantee.
- Replacement of Double-glazed units.
- Timber and composite decking and fencing.
- Property refurbishment and extensions using local, friendly, qualified tradespeople.
- Fully insured and local to Barlow.

Contact Mark on 07971 686055 or at mm.jones@btinternet.com for free advice and no obligation quotations. We look forward to hearing from you.



Renovations



Kitchens



Extensions



Composite Doors



Panelling & Media Walls



Flooring



UPVC Windows & Doors



Fencing & Decking



Bathrooms



Staircase & Spindles

No job to small - Contact local Barlow joiner Jon Beasley for a free quote

jb-joinery@hotmail.co.uk

MOBILE
HAIRSTYLIST
EMMA KEALLY



19 YEARS EXPERIENCE
07875269721
EMMAKEALLY86@GMAIL.COM

The Foot Practitioner

Foot care in the comfort of your home

Treatments Include:

- Toenail cutting**
- Corns and Callus**
- Thickened Nails**
- Cracked Heels**



Keep your feet healthy book your appointment today

Lucy Symons DipCFHP, MPSPract
Tel 0114 2890271 / 07803 175321



**Please call or email
for free advice, estimates
and quotations**

0797 577 5848

Jake.eville@hotmail.com



GREEN BEAN

**GARDENING AND LANDSCAPING
SERVICES**

Matthew Bean

MOBILE 07725886519

E-Mail: greenbean278@googlemail.com



Garden Clearances
Fencing & Lawn Care
Block Paving
Garden Maintenance
Garden Walls
Hedge Cutting

Tree Services
Planting
Snow Services
Logs for sale
Decking & Turfing
Children's Play Areas



Peak Oil

Local Family Supplier of:

**Heating Oil, Aga Oil and
Farm Fuels**

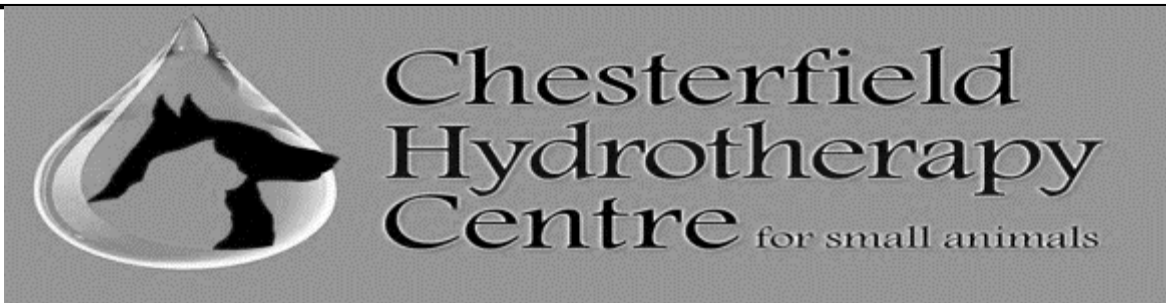
We also stock:

**Fuchs Lubricants
Storage Tanks
Tank Monitors**



**Fuel Accessories
Fuel Additives
Adblue**

For an instant online quote visit:
WWW.PEAKOIL.CO.UK



More Than Just Swimming for Dogs

We at Chesterfield Hydrotherapy Referral Centre are fully qualified to treat medical, orthopaedic and neurological conditions as well as simply swimming for fitness and fun, including:

- Osteoarthritis
- Degenerative Myelopathy
- Intervertebral Disc Disease (degenerative type)
- Fibrocartilagenous Embolism (FCE)
- Luxating Patellar
- Obesity
- Hip and Elbow Dysplasia
- Legg Calve Perthes Disease
- Chronic Degenerative Radiculomyelopathy (CDRM)
- Cruciate Ligament Injuries
- Spinal Injuries
- Depression
- Spondylosis

Some of the benefits which can be obtained from hydrotherapy include:

Faster recovery from injuries, including fractures and soft tissue

Muscle strengthening, maintenance and rehabilitation

Pre/post-operative conditioning and recovery

Relief from pain, swelling and stiffness

Muscle balancing for working breeds

Show dog competition conditioning

Relief of frustration and boredom

Relaxation of muscle spasms

Improved mental wellbeing



Contact Jeanette on 01246 384513

Email: info@chesterfieldhydrotherapy.co.uk

Chesterfield Hydrotherapy Referral Centre is fully CHA Registered

Est. 2012

Your local flooring specialist



Dronfield
Carpets & Floors



Celebrating over **10** years of business in Dronfield, Dronfield Carpets prides itself on quality service from start to finish. Offering a wide range of quality products, Dronfield Carpets specialises in the supply and installation of Carpets, Karndean, Vinyl, Parquet & Wood Flooring and Artificial Grass.

Offering seasonal sales and promotions, they really do cover all bases... Make the most of their free AT HOME service, bringing advice, measuring and sampling directly to your door.



Our showroom is open Monday-Friday 9am-5.30pm and Saturday 10am-5pm.
Keeping our customers safe with our appointment only service. Call to book your personal appointment.

120 Sheffield Road - Dronfield - S18 2GE Tel 01246 292391
www.dronfieldcarpetsandfloors.co.uk

Follow us on Facebook @Dronfieldcarpetsandfloors
and Instagram dronfieldcarpetsfloors for ideas and offers.



CORMAR
CARPET CO

ulster

Karndean
Designflooring

LG Hausys

QUICK-STEP
FLOORS

leoline
Residential Floors

V4
WOOD FLOORING



Live well, *your* way

Start your home care journey with
Home Instead® today.

- 🏠 Home Help
- Personal Care
- 🌙 Night Care
- 👤 Companionship
- ◆ Dementia Care
- 🏠 Live-In Care



01246 580187

info.chesterfield@homeinstead.co.uk

Each Home Instead franchise is independently owned and operated. Copyright © Home Instead® 2021.

AVAILABLE TO HIRE **LUXURY 4 BERTH CAMPERVAN**



"Silver Shadow"
Luxury 4 berth campervan
available with or without
awning

Local viewing
appointments
available (S41)

FULL DETAILED INFORMATION RELATING TO 'SILVER SHADOW' CAN BE DIRECTLY ACCESSED VIA

<https://www.goboony.co.uk/campers/united-kingdom/england/derbyshire/35232>

For further details or to book a viewing please contact Mike on 07966 527063

B. Hattersley & Sons

Family Funeral Directors

Helping families of Derbyshire for over 150 years



SELECTED
Independent
FUNERAL HOMES®

B. Hattersley and Sons, Chesterfield's leading funeral director, have newly refurbished their premises. Complete with two additional chapels of rest and a spacious multi-function room, which can be used for making funeral arrangements, a full chapel for funeral services, memorial services and even afterwards for a reception and catering.



211 Chatsworth Road, Chesterfield, S40 2BA

Tel: 01246 232820

Email: info@bhattersley.co.uk | Website: www.bhattersley.co.uk

CHAS. WIDDOWSON & SON FUNERAL DIRECTORS

33, Hazelhurst Lane, Stonegravels, Chesterfield

TELEPHONE: CHESTERFIELD

(01246) 273935 -24hr Service

A complete professional personal service,
by our dedicated Funeral Directors

Derek Brigham Dip FD, MBIE MBIFD

Julia Brigham Dip FD, MBIFD

**PRE-PAID FUNERAL PLANS PRIVATE CHAPELS OF REST
QUOTES ON REQUEST**

BIN COLLECTION CALENDAR

Refuse & Recycling Collections 2024-25 (North)

recycle now



North East
Derbyshire
District Council

You are in the north of the District if you live in the following areas: Arkwright, Barlow, Brampton, Calow, Coal Aston, Cutthorpe, Dronfield, Dronfield, Woodhouse, Duckmanton, Eckington, Holmesfield, Killamarsh, Marsh Lane, Renishaw, Ridgeway, Sutton (rural properties only), Temple Normanton (rural properties only), Unstone and Wadshelf.

We will no longer be distributing calendars in November to each property. Please cut out and keep this section for your bin collection dates.

Christmas & New Year Black bin collections

| Normal collection day | Christmas collection |
|----------------------------|------------------------------|
| Monday 23 December 2024 | No collection |
| Tuesday 24 December 2024 | No collection |
| Wednesday 25 December 2024 | Bank Holiday - No collection |
| Thursday 26 December 2024 | Bank Holiday - No collection |
| Friday 27 December 2024 | No collection |
| Wednesday 1 January 2025 | No collection |



| | |
|-------------|---|
| | Christmas closure - No collection |
| BH | Bank Holiday - No refuse collection |
| Date | Collections one day later due to bank holiday |

| November 2024 | | | | | | |
|---------------|----|----|----|----|----|--|
| M | T | W | Th | F | S | |
| | | | | 1 | 2 | |
| 4 | 5 | 6 | 7 | 8 | 9 | |
| 11 | 12 | 13 | 14 | 15 | 16 | |
| 18 | 19 | 20 | 21 | 22 | 23 | |
| 25 | 26 | 27 | 28 | 29 | 30 | |

| December 2024 | | | | | | |
|---------------|----|-------|-------|----|----|--|
| M | T | W | Th | F | S | |
| 2 | 3 | 4 | 5 | 6 | 7 | |
| 9 | 10 | 11 | 12 | 13 | 14 | |
| 16 | 17 | 18 | 19 | 20 | 21 | |
| 23 | 24 | 25 BH | 26 BH | 27 | 28 | |
| 30 | 31 | | | | | |

| January 2025 | | | | | | |
|--------------|----|------|----|----|----|--|
| M | T | W | Th | F | S | |
| | | 1 BH | 2 | 3 | 4 | |
| 6 | 7 | 8 | 9 | 10 | 11 | |
| 13 | 14 | 15 | 16 | 17 | 18 | |
| 20 | 21 | 22 | 23 | 24 | 25 | |
| 27 | 28 | 29 | 30 | 31 | | |

| February 2025 | | | | | | |
|---------------|----|----|----|----|----|--|
| M | T | W | Th | F | S | |
| | | | | | 1 | |
| 3 | 4 | 5 | 6 | 7 | 8 | |
| 10 | 11 | 12 | 13 | 14 | 15 | |
| 17 | 18 | 19 | 20 | 21 | 22 | |
| 24 | 25 | 26 | 27 | 28 | | |

| March 2025 - Green bin collections re-start | | | | | | |
|---|----|----|----|----|----|--|
| M | T | W | Th | F | S | |
| 3 | 4 | 5 | 6 | 7 | 8 | |
| 10 | 11 | 12 | 13 | 14 | 15 | |
| 17 | 18 | 19 | 20 | 21 | 22 | |
| 24 | 25 | 26 | 27 | 28 | 29 | |
| 31 | | | | | | |

| April 2025 | | | | | | |
|------------|----|----|----|----|----|--|
| M | T | W | Th | F | S | |
| | 1 | 2 | 3 | 4 | 5 | |
| 7 | 8 | 9 | 10 | 11 | 12 | |
| 14 | 15 | 16 | 17 | 18 | 19 | |
| 21 BH | 22 | 23 | 24 | 25 | 26 | |
| 28 | 29 | 30 | | | | |

| May 2025 | | | | | | |
|----------|----|----|----|----|----|--|
| M | T | W | Th | F | S | |
| | | | 1 | 2 | 3 | |
| 5 BH | 6 | 7 | 8 | 9 | 10 | |
| 12 | 13 | 14 | 15 | 16 | 17 | |
| 19 | 20 | 21 | 22 | 23 | 24 | |
| 26 BH | 27 | 28 | 29 | 30 | 31 | |

| June 2025 | | | | | | |
|-----------|----|----|----|----|----|--|
| M | T | W | Th | F | S | |
| 2 | 3 | 4 | 5 | 6 | 7 | |
| 9 | 10 | 11 | 12 | 13 | 14 | |
| 16 | 17 | 18 | 19 | 20 | 21 | |
| 23 | 24 | 25 | 26 | 27 | 28 | |
| 30 | | | | | | |

| July 2025 | | | | | | |
|-----------|----|----|----|----|----|--|
| M | T | W | Th | F | S | |
| | 1 | 2 | 3 | 4 | 5 | |
| 7 | 8 | 9 | 10 | 11 | 12 | |
| 14 | 15 | 16 | 17 | 18 | 19 | |
| 21 | 22 | 23 | 24 | 25 | 26 | |
| 28 | 29 | 30 | 31 | | | |

| August 2025 | | | | | | |
|-------------|----|----|----|----|----|--|
| M | T | W | Th | F | S | |
| | | | | 1 | 2 | |
| 4 | 5 | 6 | 7 | 8 | 9 | |
| 11 | 12 | 13 | 14 | 15 | 16 | |
| 18 | 19 | 20 | 21 | 22 | 23 | |
| 25 BH | 26 | 27 | 28 | 29 | 30 | |

| September 2025 | | | | | | |
|----------------|----|----|----|----|----|--|
| M | T | W | Th | F | S | |
| 1 | 2 | 3 | 4 | 5 | 6 | |
| 8 | 9 | 10 | 11 | 12 | 13 | |
| 15 | 16 | 17 | 18 | 19 | 20 | |
| 22 | 23 | 24 | 25 | 26 | 27 | |
| 29 | 30 | | | | | |

| October 2025 | | | | | | |
|--------------|----|----|----|----|----|--|
| M | T | W | Th | F | S | |
| | | 1 | 2 | 3 | 4 | |
| 6 | 7 | 8 | 9 | 10 | 11 | |
| 13 | 14 | 15 | 16 | 17 | 18 | |
| 20 | 21 | 22 | 23 | 24 | 25 | |
| 27 | 28 | 29 | 30 | 31 | | |



Photo by Roger Barrett